

ELEV 1171

CAT A,B,C

QUEENSTOWN

NZQN

RNAV (RNP) ANPOV THREE ALFA DEPARTURE

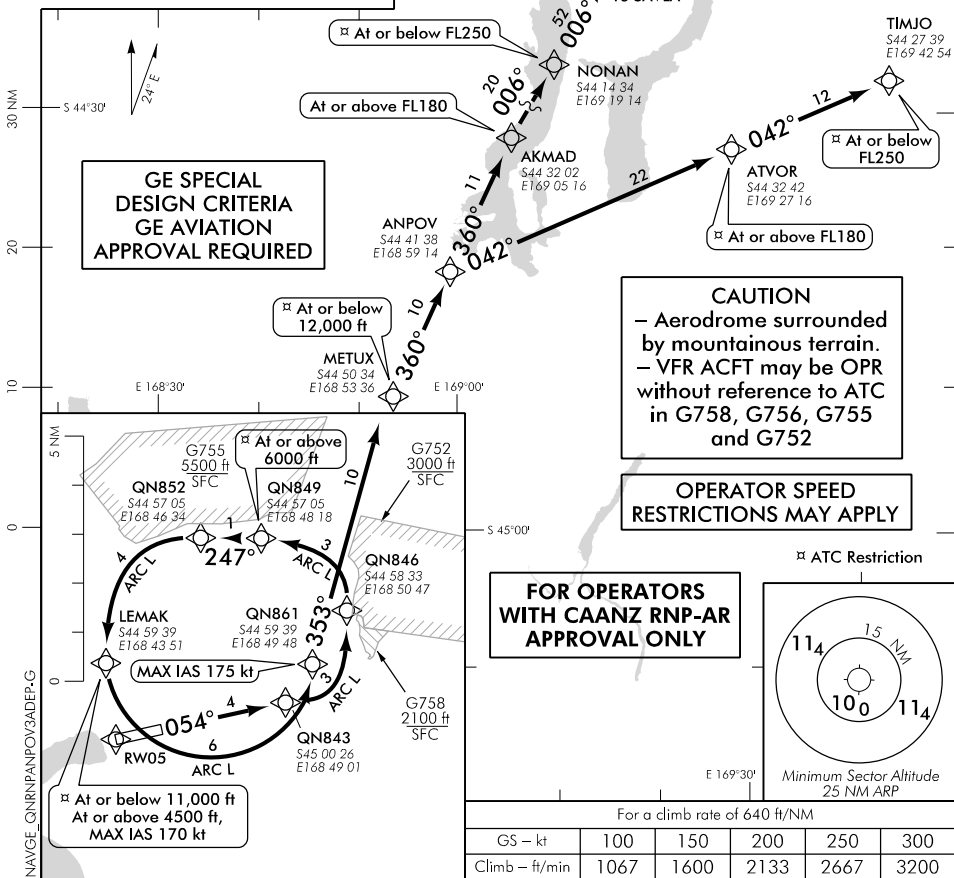
TOWER: 118.1 128.9

APPROACH: 125.75

ATIS: 126.4

UNATTENDED: 118.1

DO NOT USE FOR NAVIGATION



**DEPARTURE PROCEDURES – TAKE-OFF RWY 05
ANPOV THREE ALFA DEPARTURE – RNAV (RNP) ANPOV3A**

Note 1. When QUEENSTOWN TOWER on watch: Passing 7000 ft contact QUEENSTOWN APPROACH 125.75 MHz advising departure being flown

Requirements

- Requires RNP 0.30 or lower to METUX
- RF required
- Requires a minimum climb gradient of 10.5% (640 ft/NM) to 6000 ft – if unable to comply advise ATC prior to start-up

To SAVLA

- Fly the RNAV (RNP) track to METUX, then proceed on RNP 1 transition to SAVLA
- Cross QN849 at or above 6000 ft
- Cross LEMAK at or below 11,000 ft: minimum branch altitude 4500 ft
- Do not exceed 170 kt IAS until turn is complete at LEMAK
- Do not exceed 175 kt IAS until turn is complete at QN861
- Cross METUX at or below 12,000 ft
- Cross AKMAD at or above FL180
- Cross NONAN at or below FL250
- EO Branch Point is LEMAK

To TIMJO

- Fly the RNAV (RNP) track to METUX, thence proceed on RNP 1 transition to TIMJO
- Cross QN849 at or above 6000 ft
- Cross LEMAK at or below 11,000 ft: minimum branch altitude 4500 ft
- Do not exceed 170 kt IAS until turn is complete at LEMAK
- Do not exceed 175 kt IAS until turn is complete at QN861
- Cross METUX at or below 12,000 ft
- Cross ATVOR at or above FL180
- Cross TIMJO at or below FL250
- EO Branch Point is LEMAK

Effective: 9 NOV 17

© Civil Aviation Authority

**QUEENSTOWN
RNAV (RNP) ANPOV THREE ALFA DEPARTURE**

Changes from 25 MAY 17: Procedure review.

ELEV 1171

NZQN

TOWER: 118.1 128.9

APPROACH: 125.75

ATIS: 126.4

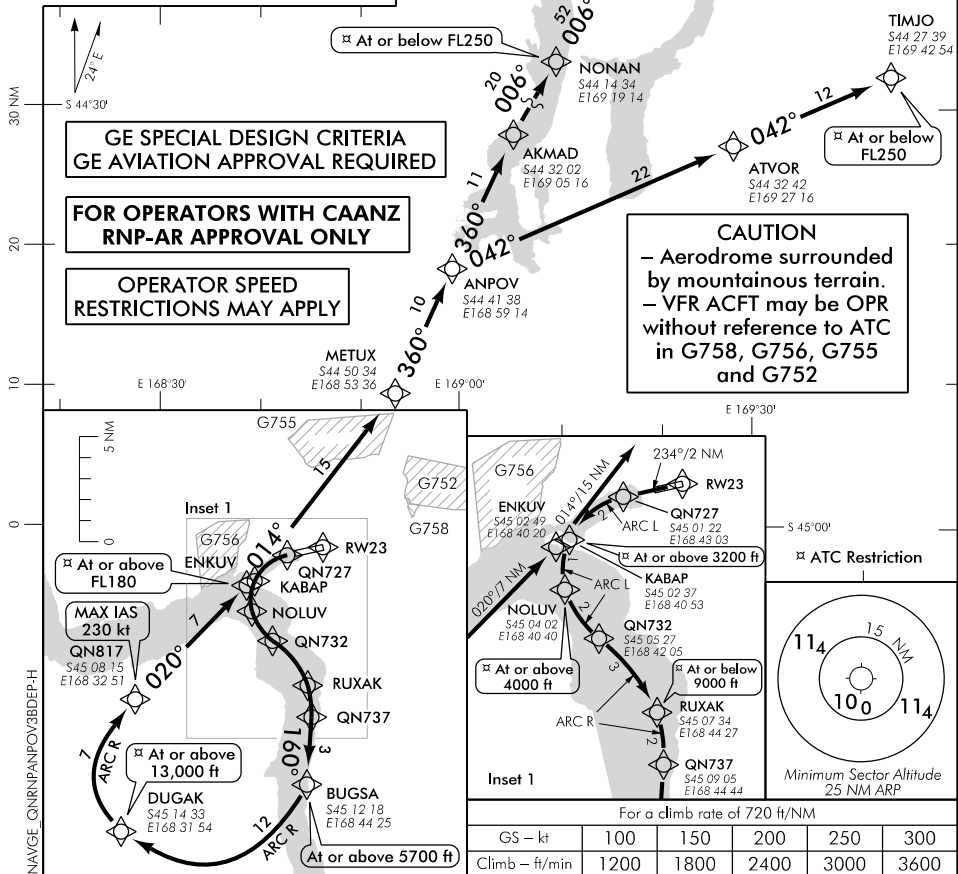
UNATTENDED: 118.1

CAT A,B,C

QUEENSTOWN

RNAV (RNP) ANPOV THREE BRAVO DEPARTURE

DO NOT USE FOR NAVIGATION



DEPARTURE PROCEDURES – TAKE-OFF RWY 23 ANPOV THREE BRAVO DEPARTURE – RNAV (RNP) ANPOV3B

Note 1. When QUEENSTOWN TOWER on watch: Passing 7000 ft contact QUEENSTOWN APPROACH
125.75 MHz advising departure being flown

Requirements

- Requires RNP 0.30 or lower to ENKUV
- RF required
- Requires a MNM net climb gradient of 11.8% (720 ft/NM) to 3200 ft, thence 9.1% (552 ft/NM) to 4000 ft, thence 6.9% (422 ft/NM) to 13,000 ft, thence 5.7% (347 ft/NM) to FL180 – If unable to comply advise ATC prior to start-up

To SAVLA

- Fly the RNAV (RNP) track to ENKUV, thence proceed on RNP 1 transition to SAVLA
- Cross KABAP at or above 3200 ft
- Cross NOLUV at or above 4000 ft
- Cross RUXAK at or below 9000 ft
- Cross BUGSA at or above 5700 ft
- Cross DUGAK at or above 13,000 ft
- Do not exceed 230 kt IAS until turn is complete at QN817
- Cross ENKUV at or above FL180
- Cross NONAN at or below FL250
- EO Branch Point is BUGSA

To TIMJO

- Fly the RNAV (RNP) track to ENKUV, thence proceed on RNP 1 transition to TIMJO
- Cross KABAP at or above 3200 ft
- Cross NOLUV at or above 4000 ft
- Cross RUXAK at or below 9000 ft
- Cross BUGSA at or above 5700 ft
- Cross DUGAK at or above 13,000 ft
- Do not exceed 230 kt IAS until turn is complete at QN817
- Cross ENKUV at or above FL180
- Cross TIMJO at or below FL250
- EO Branch Point is BUGSA

Changes from 25 MAY 17: Procedure review.

Effective: 9 NOV 17